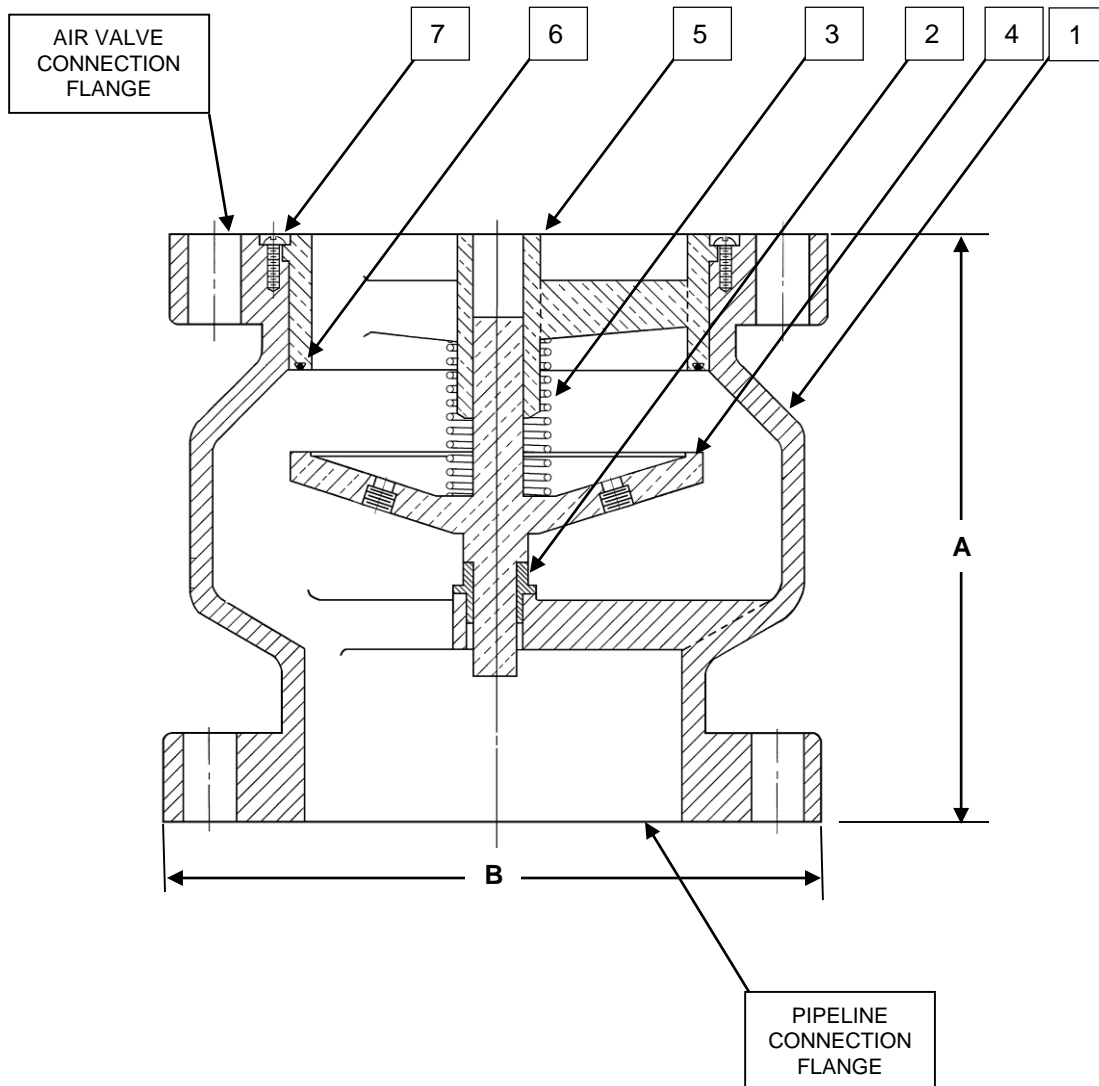


SIZE	3"	4"	6"	8"	10"	12"	
A	6"	7-1/4"	9-3/4"	12-1/2"	15-1/2"	14-1/4"	
ANSI Class 125	B	7-1/2"	9"	11"	13-1/2"	16"	19"
	WGT	28	40	74	120	195	285

PARTS LIST		
Part	Name	Standard Material
1	Body	Cast Iron, ASTM A126 Class B
2	Bushing	Type 316 Stainless Steel
3	Spring	Type 302 Stainless Steel
4	Plug	Type 316 Stainless Steel
5	Seat	Type 316 Stainless Steel
6	O-Ring	Buna-N
7	Seat Screw	18-8 Stainless Steel

Part 7 not used in 3" size, seat is threaded into body



NOTES.

1. Valve shown in open position

FIGURE NUMBER	FLANGE	MAXIMUM WORKING PRESSURE	HYDRO TEST PRESSURE
284-D	ANSI Class 125	200 PSI	300 PSI

GA INDUSTRIES, a VAG Brand		
DATE: 5-28-19	DRAWN BY: WJN	
3" to 12" SURGE CHECK VALVE		
Figure 284-D	DRAWING NO. C-7029-W	REV A